

OceanTools

C-Enhancer

Video image enhancement system

C-Enhancer is a powerful *real-time* video enhancement system that *dynamically* colour balances a standard definition (SD) composite video signal to produce a more natural looking video.



'Before' and 'After' images of a cannon on a sunken battleship

Overview

The **OceanTools C-Enhancer** dynamically balances a composite video signal's Red, Green and Blue channels to generate an enhanced video with significantly more natural-looking colours.

The **C-Enhancer** can also remove the 'fish eye' effect generated by wide angle camera lenses. *

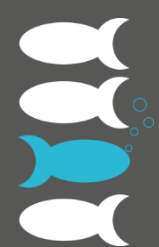
Applications include:

- ROV operations
- Subsea inspection
- Marine archaeology
- Aquaculture
- Diving



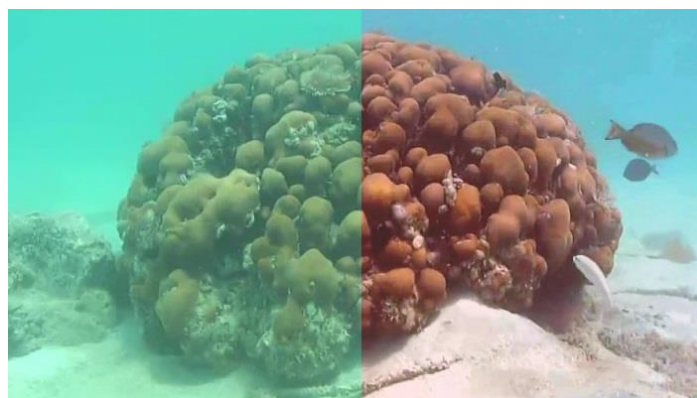
'Before' and 'After' images of a curious fish

* Please note that there is a calibration process required to enable fish eye effect removal, which requires cameras to be sent to OceanTools for this process



Key Features

- Simple BNC input/output for easy integration
- Auto-sensing of camera format
- Auto colour balancing in the RGB channels
- RS232 for integration with zoom systems
- Fish-eye effect removal (cropped and un-cropped)
- Low light enhancement with different contrast stretching presets
- Real time correction with no noticeable delay
- HD enhancer and standalone post-processing software currently in development



'Before' and 'After' images of coral

Our YouTube channel features examples of real videos that have been enhanced using **C-Enhancer**: www.youtube.com/user/OceanToolsLtd

Specifications		
Video standard	PAL	625 line - 25fps
	NTSC	525 line - 30fps
Connection	BNC	
Format	19" 2U rack mount unit	
Power	110/220V AC	
Processing Delay	No worse than 50ms	

Product datasheets, GA drawings, case studies and other supporting documents are available to download from data.oceantools.co.uk
All specifications are subject to change without notice. E&OE.

Version 8 (27.07.2018)

