

The **OceanTools C-Switch** is a *rugged* and *reliable* range of ROV or diver operated underwater switches, designed for a variety of power switching applications.



## Overview

The **C-Switch** uses a non-contact switching method which allows for the switching of up to 4A at 24VDC or 120VAC. This makes it ideal for use with subsea battery packs and may be used as a **Master On/Off** switch to isolate the battery pack and thus extend its operational life.

The **C-Switch** has **Normally Open**, **Normally Closed** and **Common** connections.

The rotary mechanism may be operated via any ROV manipulator or a diver's hand, with a maximum operating torque of 50Nm. Positive detents are provided in both on and off positions to ensure the switch does not accidentally turn off due to shock or vibration.

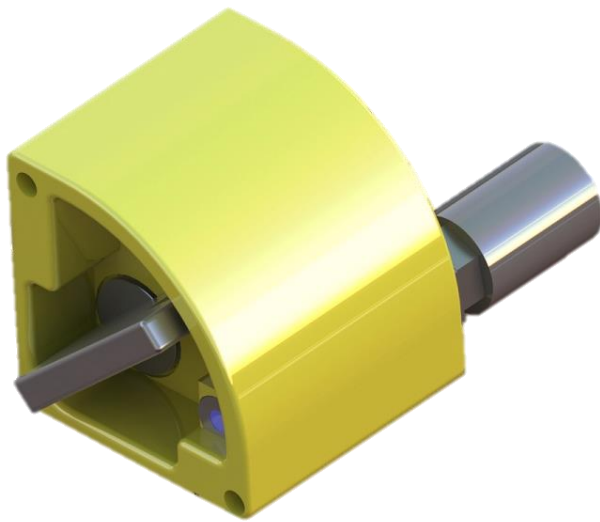
The **C-Switch** is machined from nylon and stainless steel and has been designed for maximum longevity in harsh underwater environments. It is chemically inert and corrosion free, thus making it suitable for long-term deployment.

## Options

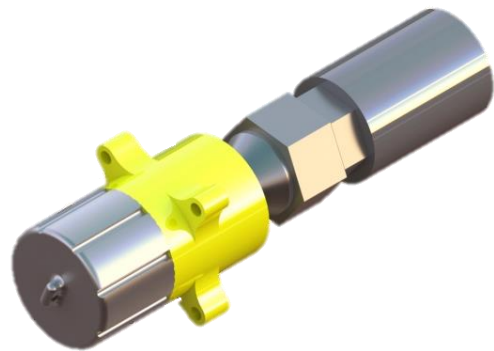
Two compact variants of the original **C-Switch** design are also available:

- The **Mini C-Switch** is smaller than the original design, with a 100mm front plate. The shorter lever can be operated by a small ROV manipulator, or by a diver's hand.
- The **Micro C-Switch** is smaller still, with mounting points at 38mm spacing. Designed for situations where space is at a premium, its rotary knob can be operated by hand.

All variants have the same internal switching mechanism and connector.



*Mini C-Switch*



*Micro C-Switch*

## Key Features

- 7000m depth rating as standard
- Positive detents in On and Off positions
- Maximum operating torque 50Nm
- 3 pin Impulse connector