



# OceanTools

## OceanCAM-SD

### Colour zoom camera

The **OceanCAM-SD** is a high quality, rugged and compact underwater camera with Super HAD CCD technology giving it high light sensitivity combined with superior definition.



## Overview

The **OceanCAM-SD** has been designed to serve a wide range of roles underwater including ROV navigation and inspection and anchor chain monitoring. It has both RS485 and RS232 serial interfaces allowing control over:

- Zoom, Focus, Iris, White Balance
- Auto-focus, Auto-iris, Auto-white balance, Image Flip
- Umbilical set-up for length, video gain and HF gain
- Text overlay allowing 11 lines of 20 characters

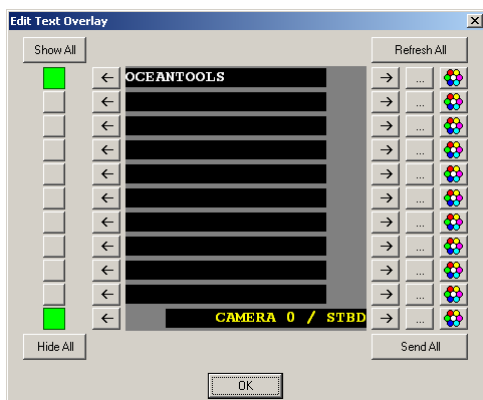
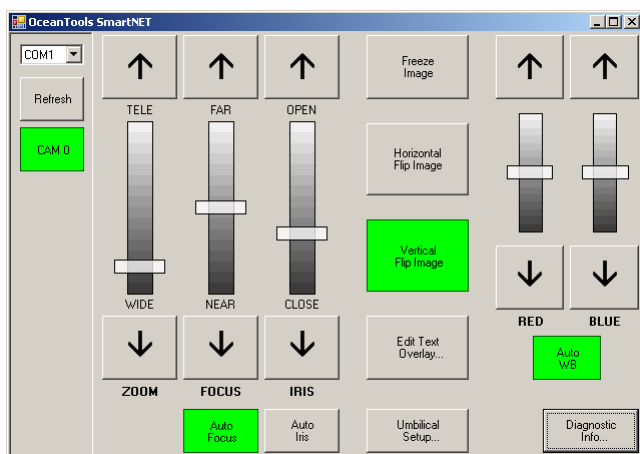
The **OceanCAM-SD** uses the same SmartNET protocol as other OceanTools video-related sensors. This means it can share the same twisted pair as multiple OceanTools **OceanLED** lights and OceanTools **PT330** electric pan & tilt units. The controller electronics automatically detect and select between RS232 and RS485 serial control - whichever is connected is selected.

A simple and intuitive GUI is provided to control all camera functions.

The camera has a sapphire glass view port and a hard anodised aluminium body tube with 3000m standard depth rating. Titanium is available as an option.

## Key Features

- 3000m standard depth rating
- Sapphire glass view port
- Simple and intuitive GUI
- On-screen text overlay
- Long-line driver including HF lift



## Specifications

<b>Length (excl connector)</b>	188mm
<b>Diameter</b>	125mm
<b>Material</b>	Hard anodised aluminium
<b>Weight in air</b>	1.5kg
<b>Weight in water</b>	0.2kg
<b>Depth rating</b>	3000m
<b>Operating temperature</b>	-5°C to +50°C
<b>Input voltage</b>	9–36VDC
<b>Maximum current</b>	475mA @ 9VDC
<b>Sensor type</b>	1/4" EX-view HAD CCD
<b>Minimum illumination</b>	0.7 Lux
<b>Resolution</b>	625 TVL PAL 50Hz 525 TVL NTSC 60Hz
<b>Output</b>	1V p-p 75 ohm
<b>S/N ratio</b>	≥ 50dB
<b>Zoom</b>	18x (optical) 12x (digital)
<b>Focus</b>	0mm–infinity (wide) 800mm–infinity (tele)
<b>Diagonal view angle</b>	60° (in air) 41° (in water)
<b>View port</b>	Sapphire glass
<b>Control interface</b>	RS232 or RS485