

The **OceanCELL** and **MiniCELL** range of rechargeable subsea battery packs are suitable for powering a variety of underwater sensors and instrumentation.



*MiniCELL*

## Overview

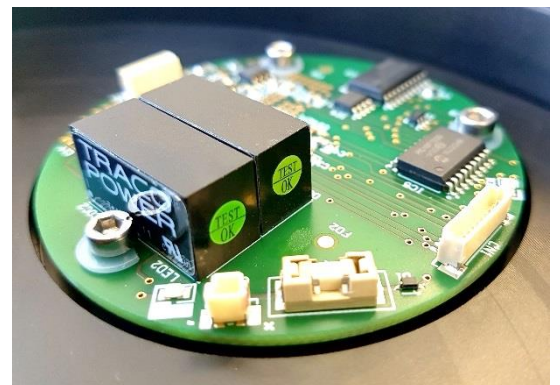
**OceanCELL** and **MiniCELL** subsea battery packs are suitable for a wide range of applications such as powering gyrocompasses, tilt sensors, underwater displays and other instrumentation.

The **OceanCELL-12** consists of a single *UN 38.3 Approved* lithium-ion polymer battery pack, assembled in a 3000m depth rated housing. The **OceanCELL-25** and **OceanCELL-38** contain multiple individually *UN 38.3 Approved* battery packs for extended periods of operation down to 4000m depth.

The unit can be safely switched on for charge and discharge by an external **C-Switch** master on/off switch or by inserting the supplied shorting plug. Custom battery packs may be designed to a client's precise specifications to supplement our range of standard battery packs.

## Options

- Optional **C-Switch** subsea master on/off switch
- Optional voltage monitoring electronics
- Custom depth ratings in various materials
- Choice of subsea connectors
- Vent plug



*Optional voltage monitoring board*

## Specifications

	MiniCELL	OceanCELL-12	OceanCELL-25	OceanCELL-38
<b>Battery type</b>	Rechargeable Lithium-Ion Polymer			
<b>Nominal voltage</b>	25.9VDC			
<b>Nominal capacity</b>	3.6Ah	12.6Ah	25.2Ah	37.8Ah
<b>0.2C discharge current</b>	0.7A	2.5A	5.0A	7.5A
<b>Max discharge current</b>	7A	16A	32A	48A
<b>Typical charge current</b>	1.2A	3A	3A	6A
<b>Typical charge duration</b>	4–5 hours	6–7 hours	12–14 hours	8–10 hours
<b>Length (excl connectors)</b>	206mm	336mm	358mm	360mm
<b>Diameter</b>	88mm	145mm	210mm	255mm
<b>Weight in air</b>	2.4kg	7.9kg	23kg	33kg
<b>Weight in water</b>	1.4kg	3.3kg	11kg	15kg
<b>Operating temperature</b>	0°C to +45°C			
<b>Depth rating</b>	3000m		4000m	
<b>Standard connectors *</b>	Subconn MCBH4F and MCBH5F	Glenair G5507-1503 and G5507-1508		

*\* Alternative connectors can be fitted on request*

## Related Products

A **C-Switch** ROV or diver operated underwater switch can reliably isolate a battery pack from powered devices for safer operation both on deck and subsea. In addition to the original design (pictured) there are the more compact Mini design with a shorter lever and Micro design with a hand-operated rotary knob.



C-Switch

Product datasheets, GA drawings, case studies and other supporting documents are available to download from [data.oceantools.co.uk](http://data.oceantools.co.uk)  
All specifications are subject to change without notice. E&OE.

Version 18 (09.02.2024)